

PGF Antibody (Center)
Affinity Purified Rabbit Polyclonal Antibody (Pab)
Catalog # AP14578c

Specification

PGF Antibody (Center) - Product Information

Application	WB, IHC-P,E
Primary Accession	P49763
Other Accession	NP_002623.2
Reactivity	Human
Host	Rabbit
Clonality	Polyclonal
Isotype	Rabbit IgG
Calculated MW	24789
Antigen Region	120-148

PGF Antibody (Center) - Additional Information

Gene ID 5228

Other Names

Placenta growth factor, PIGF, PGF, PGFL, PLGF

Target/Specificity

This PGF antibody is generated from rabbits immunized with a KLH conjugated synthetic peptide between 120-148 amino acids from the Central region of human PGF.

Dilution

WB~~1:1000

IHC-P~~1:10~50

E~~Use at an assay dependent concentration.

Format

Purified polyclonal antibody supplied in PBS with 0.09% (W/V) sodium azide. This antibody is purified through a protein A column, followed by peptide affinity purification.

Storage

Maintain refrigerated at 2-8°C for up to 2 weeks. For long term storage store at -20°C in small aliquots to prevent freeze-thaw cycles.

Precautions

PGF Antibody (Center) is for research use only and not for use in diagnostic or therapeutic procedures.

PGF Antibody (Center) - Protein Information

Name PGF

Synonyms PGFL, PLGF

Function Growth factor active in angiogenesis and endothelial cell growth, stimulating their proliferation and migration. It binds to the receptor FLT1/VEGFR-1. Isoform PIGF-2 binds NRP1/neuropilin-1 and NRP2/neuropilin-2 in a heparin-dependent manner. Also promotes cell tumor growth.

Cellular Location

Secreted. Note=The three isoforms are secreted but PIGF-2 appears to remain cell attached unless released by heparin

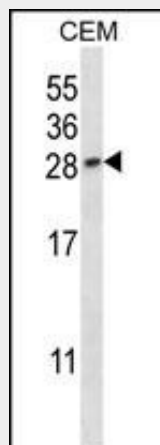
Tissue Location

While the three isoforms are present in most placental tissues, PIGF-2 is specific to early (8 week) placenta and only PIGF-1 is found in the colon and mammary carcinomas

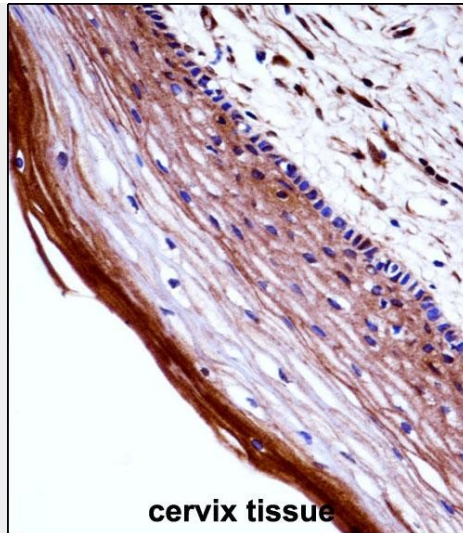
PGF Antibody (Center) - Protocols

Provided below are standard protocols that you may find useful for product applications.

- [Western Blot](#)
- [Blocking Peptides](#)
- [Dot Blot](#)
- [Immunohistochemistry](#)
- [Immunofluorescence](#)
- [Immunoprecipitation](#)
- [Flow Cytometry](#)
- [Cell Culture](#)

PGF Antibody (Center) - Images

PGF Antibody (Center) (Cat. #AP14578c) western blot analysis in CEM cell line lysates (35ug/lane). This demonstrates the PGF antibody detected the PGF protein (arrow).



PGF Antibody (Center) (AP14578c) immunohistochemistry analysis in formalin fixed and paraffin embedded human cervix tissue followed by peroxidase conjugation of the secondary antibody and DAB staining. This data demonstrates the use of PGF Antibody (Center) for immunohistochemistry. Clinical relevance has not been evaluated.

PGF Antibody (Center) - Background

The PGF gene encodes placenta growth factor, a homolog of vascular endothelial growth factor (VEGFA; MIM 192240), that selectively binds to VEGFR1 (FLT1; MIM 165070) and is involved in angiogenesis (Fischer et al., 2007 [PubMed 17981115]; Bais et al., 2010 [PubMed 20371352]).

PGF Antibody (Center) - References

Romero, R., et al. Am. J. Obstet. Gynecol. 203 (4), 361 (2010) :
Cowans, N.J., et al. Prenat. Diagn. 30(6):565-570(2010)
Romero, R., et al. Am. J. Obstet. Gynecol. 202 (5), 431 (2010) :
Andersson, M.K., et al. BMC Cancer 10, 249 (2010) :
Pan, P., et al. BMC Cell Biol. 11, 36 (2010) :